

2-WAY MUSIC PROJECTOR

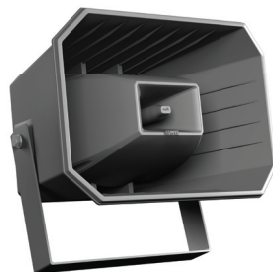
MPLT32 / MPLT62

The MPLT is a 2 way music projector with long throw output performance in order to bring you quality sound over long distances and in wide areas. Thanks to the well-considered coverage range, high sensitivity, high output, low distortion and extended frequency response, this horn loaded 2 way speaker is the ideal loudspeaker for outdoor applications such as recreational facilities, schools, parking facilities, as well as large indoor applications such as sports centers, airports, exhibition halls ...

Compared to normal horns and sound projectors, our proprietary designed APart MPLT32 and MPLT62 have a very clear and high quality sound to make it useful for quality music reproduction, paging or voice alarm with perfect intelligibility, or even alarm tones.

The MPLT's cabinet is made of high impact ABS, supplied with a strong aluminium bracket

to avoid corrosion, making it fully weatherproof, according to IEC IP-66 Standards. The loudspeaker is equipped with a high quality 100 volt transformer with several power taps. The standard colour is light grey. From 12 pieces upward, the speaker can be supplied optionally in any RAL colour (Ref: PAINTMPLT).



Mounting the loudspeaker

An aluminium mounting bracket for mounting is included in the packing. The bracket allows you to rotate the speaker over a range of more than 180 degrees. Securely mount the bracket to a wall or other solid surface.

Connect the 100V speaker line to the connector accessible behind the weatherproof cover at the back and make sure to securely tighten the cable strain relief.

Power Tappings

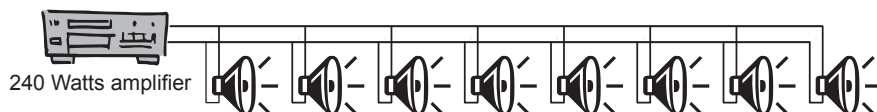
COLOUR	MPLT32	MPLT32	MPLT62	MPLT62
WHITE	4 WATTS	2K5 Ω	8 WATTS	1K3 Ω
GREEN	8 WATTS	1K2 Ω	16 WATTS	625 Ω
YELLOW	16 WATTS	625 Ω	32 WATTS	312 Ω
RED	32 WATTS	312 Ω	62 WATTS	161 Ω
BLACK	COMMON		COMMON	

Technical Specifications

- Type : 2 way exponential horn, long throw
- Woofer : 6.5 inch cone type
- Tweeter : 1 inch horn driver
- Standard colour : light gray
- Rated power handling RMS : 32 W @ 100 volt (model32)
- Rated power handling RMS : 62 W @ 100 volt (model62)
- Transformer power taps : 32-16-8-4 W @ 100V (model32)
- Transformer power taps : 62-32-16-8 W @ 100V(model62)
- SPL 1W/1m: 106 dB
- SPL max 120dB (model32)
- SPL max 123dB (model62)
- Frequency range: 75Hz - 18 kHz
- Dispersion (H x V): 110° x 80°
- IP Rating: 66
- Dim. without bracket (mm) HxWxL: 250 x 360 x 290
- Bracket W x D (mm): 285 x 210
- Weight including bracket : 4.90 Kg (model32)
- Weight including bracket : 5.00 Kg (model62)
- Mounting holes : 3 x Ø 10 mm, 60 mm spacing

100 Volt Technology

$$231 \text{ Watts} = 62 + 62 + 31 + 31 + 15 + 15 + 7.5 + 7.5$$



Amplifier power must be higher than total power of all speakers.

Het versterkervermogen moet hoger zijn dan de som van de vermogens van de luidsprekers.

La puissance de l'amplificateur doit être plus élevée que la puissance totale des haut parleurs.